

# WATERMELN®

waterstof aggregaat

“Een Watermeln is eigenlijk een **sterke accupack** met een **ingebouwde fuelcell** op waterstof als back-up”  
- Jasper Baltus, Co-Founder Watermeln

## De kengetallen

**5 tot 15 MWh**  
per tank beurt

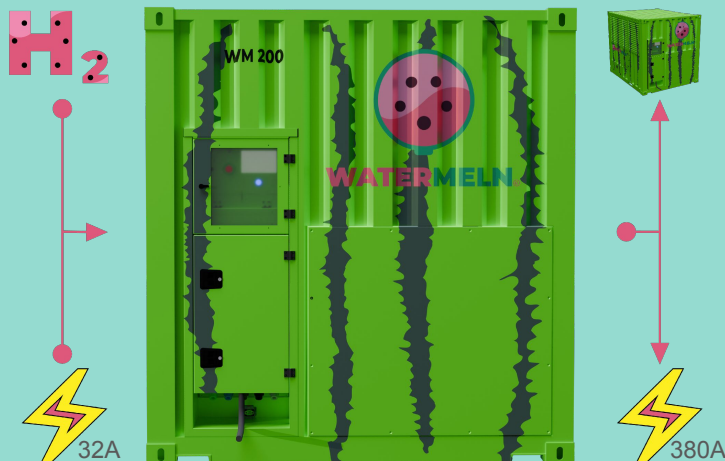
**1 KG = 15 kWh**  
plus water en warmte

**<30 minuten**  
wisseltijd H<sub>2</sub>

**Altijd stroom**  
door de accu

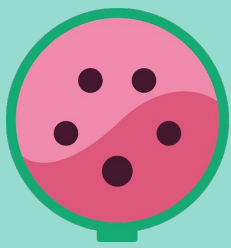
**5m x 12m**  
WM + H<sub>2</sub> + ATEX  
H<sub>2</sub> in 20ft container

**Geen uitstoot**  
altijd groen



vanaf **500 kWh/d**  
voordelig off-grid

**€0,69 - €0,79**  
per kWh | pay per use  
€9/kg h<sub>2</sub> | incl transport | ex huur



# WATERMELN®









## waterstof aggregaat

### Spec sheet

WM200

WM250



	<b>Power</b>	200 kW AC continu   350 kW piek 60 kW DC (optional)	
	23/7 BoL <b>FC</b>	75 kW	160 kW
	<b>Batterij</b>	120 kWh	240 kWh
	<b>Output</b>	2x Powerlock 380A, 2x 125A 5p	
	<b>Input - AC</b>	1x 63A 5P (max 22 kW)	optional
	<b>Input - H2</b>	max 450 bar   WM Gas Control box	
	<b>LBH / KG</b>	2,99 x 2,44 x 2,59 meter Gewicht: 4500 kg	5500 kg
	<b>Veiligheid</b>	ADR   CE keuring   EVD (ATEX)	
	<b>Monitoring</b>	<a href="#">My.Watermeln</a> cloud monitoring	

### Schone stroom, zonder zorgen

### Schone waterstof, zonder zorgen

Alle Watermeln's hebben all-in waterstof service, zowel bij huur als koop!



Watermeln B.V.  
+31 (0) 20 705 89 70  
info@watermeln.com

www.watermeln.com  
Zekeringstraat 7  
Amsterdam

